

Pelham High School

85 Marsh Road, Pelham, NH 03076

www.pelhamsd.org

Dawn Mead
Principal

Adam Barriere
Assistant Principal

Kelly Holmes
Assistant Principal

Kaitlin Carmody
Special Ed Coordinator

Justin Hufft
Athletic Director

Main Office: (603) 635-2115
Counseling Dept: (603) 635-2116
Fax: (603) 635-3994
CEEBS Code: 300482

Counselors

Holly Emmett hemmett@pelhamsd.org	A-De
Alexandria Gauthier agauthier@pelhamsd.org	Di-Le
Heather Kress hkress@pelhamsd.org	Li-O
Erica Erelli eerelli@pelhamsd.org	P-Z

Enrollment Data 2024-2025

Grades 9-12 (526)

Class of 2024 Statistics

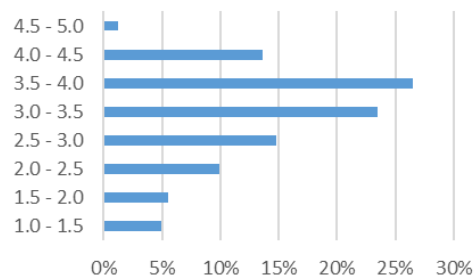
4-Year College	58%
2-Year College	9%
Total	67%
Employment	25%
Other	8%

Graduation Requirements

26 Required Credits
40 Hours Community Service

Subject	# Credits
English	4
Social Studies	3
Math	3.5
Science	3
Physical Education	1
Health	.5
Fine Arts	.5
Computers	.5
Personal Finance	.5
Open Electives	9

Percentage of Students by GPA Range



School and Community

Pelham High School is a four-year, comprehensive public high school accredited by the New Hampshire Department of Education and the New England Association of Schools and Colleges. Pelham is a suburban town located in the southernmost point of New Hampshire with a population of approximately 13,000 people. Students are encouraged to take courses from a variety of subject areas to fulfill their 26 credit graduation requirement.

Curriculum

Pelham High School provides its students with a comprehensive curriculum. Progressive work is available in the core subject areas. A course without a leveling designation is designed for the college and career bound student. All level 1 courses provide an accelerated program for college-bound students. Students who elect Honors earn the notation on their transcripts.

We offer a challenging and individualized academic experience for our students. In addition to offering Honors, AP level courses, and college credit opportunities, Pelham provides students with opportunities to extend their learning through independent study, internships, and online learning through the Virtual Learning Academy.

Competency-Based Education

Students advance through a course or earn credit based on their ability to master skills or competencies in a content area. Each course includes three competencies students are expected to master (1) Skills and Content Knowledge; (2) Application and Analysis; and (3) Communication. Each competency is broken down into a smaller set of required skills, abilities, and knowledge.

Class Schedule

Pelham high school has a 4 x 4 block schedule. We offer semester and quarter classes. Students take four classes per day for 77 minutes plus a 39 minute advisory for social and emotional learning and academic support.

Grading

Pelham uses a rolling grade system and the calculation for all final course grades are based on a student mastery of course specific competencies. GPA is reported on the transcript as weighted. GPA does not include "Pass/Fail" courses or courses transferred to Pelham High School, with the exception of courses from VLACS.

Honors Classes

Freshman English-Honors, Sophomore English-Honors, World Literature Classics-Honors, World Studies -Honors,, Economics-Honors, Civics-Honors, Physical Science Honors, College Prep Biology-Honors, Biochemistry-Honors, Physics-Honors, Algebra 1 Honors, Algebra II Honors, Geometry Honors, Pre-Calculus Honors, Calculus Honors, Yearbook Honors, Marching Band Honors, Exercise Physiology Honors

Grading Scale

	Non-Leveled	Level I	Honors/College Credit	AP
A+	4.33	4.67	4.84	5.00
A	4.00	4.33	4.50	4.67
A-	3.67	4.00	4.17	4.33
B+	3.33	3.67	3.84	4.00
B	3.00	3.33	3.50	3.67
B-	2.67	3.00	3.17	3.33
C+	2.33	2.67	2.84	3.00
C	2.00	2.33	2.50	2.67
C-	1.67	2.00	2.17	2.33
D	1.00	1.33	1.50	1.67
F	0.00	0.00	0.00	0.00

AUD – Course Audit

F – Fail

I - Incomplete

MW – Medical Withdrawal

P - Pass

WP – Withdraw Pass

WF – Withdraw Fail

SAT Testing Information Class of 2024

ERW	484
Math	473
Total	957

Dual Enrollment Statistics

Year	# of Students Registered	# of College Courses
2021-2022	400	31
2022-2023	389	31
2023-2024	360	32

Dual Enrollment Course

Accounting CC
American Literature Classics
Calculus CC
Chemistry CC
College Composition
Computer Applications II CC
Computer-Aided Design (CAD)
Creative Writing
Drawing and Painting II
Manufacturing Processes CC
Music Theory
Personal Financial Planning
Principles of Marketing
Spanish IV
Spreadsheet:Excel
Statistics CC
U.S. History College Credit

AP Courses

AP Biology AP US Government
AP Environmental Science
AP Literature & Composition
AP Psychology
AP Studio Art

Class Rank

Class rank is based on a cumulative weighted grade point average where classes receive the weight by course level.

Career and Technical Programs

Students have the opportunity to participate in Career and Technical Education (CTE) course work. CTE courses are designed to stimulate actual workplace environments. Students use state-of-the-art equipment, participate in school-based enterprises and Career and Technical Student Organizations (CTSO) and perform competencies that are aligned with industry standards. Many programs have industry recognized certifications available and/or college credit connected with the Community College System of New Hampshire.

Athletic Participation

PHS offers a three-season interscholastic athletic program on the varsity and junior varsity level under the auspices of NHIAA.

Activities

To encourage student greater involvement in their school beyond academics, PHS offers more than 30 other extra-curricular activities, including athletics, honor societies, leadership, and clubs.

Colleges and Universities Students Attended in the Last 5 Years

Assumption College	Penn State University
Bentley University	Plymouth State University
Boston University	
Brigham Young University	Purchase College -SUNY
Bryant University	Quinnipiac University
Champlain College	Rensselaer Polytechnic Institute
Colby-Sawyer College	Rivier University
Colgate University	Rochester Institute of Technology
College of the Holy Cross	Roger Williams University
Embry-Riddle University	Rutgers University
Emerson College	Saint Anselm College
Endicott College	Saint Michael's College
Fitchburg State University	Salem State University
Fordham University	Southern New Hampshire University
Franklin Pierce University	Stonehill College
Harvard University	Suffolk University
High Point University	Syracuse University
Hofstra University	The University of Tampa
Johns Hopkins University	Texas A&M University
Johnson & Wales University	Trinity University
Keene State College	Tufts University
Lesley University	United States Air Force Academy
Mass. College of Pharmacy	United States Naval Academy
Merrimack College	University of Connecticut
Montserrat College of Art	University of Massachusetts
New England College	University of New England
New Hampshire Institute of Art	University of New Hampshire
New York Institute of Tech	University of New Haven
New York University	University of Rhode Island
Northeastern University	University of Vermont
Norwich University	Wentworth Institute of Technology
Oberlin College	Worcester Polytechnic Institute
Olin College of Engineering	
Pace University	

[illegible]